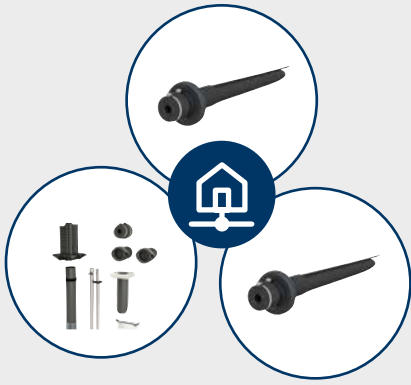


## HVAC, Water and Wastewater

Innovative sealing solutions for service penetrations in buildings





## Building entry

Single building entries from Hauff-Technik can be relied upon for professional and reliable seals between buildings and supply lines for gas, water, power or telecommunications. Whether through basement walls or floor slabs, they can be installed quickly and safely in a matter of minutes and are gas-tight and watertight up to 1 bar.

## Building services outlets

The ETGAR building services outlet routes the electrical cables from the connection room to all the facilities on the property and the associated parking spaces that are subsequently to be supplied with electricity. The building services outlets meets all building sealing requirements – such as gas and water tightness as well as radon protection.



## Earthing

The Hauff-Technik HMK is a pressure-tight floor penetration system that securely guides earthing rods, ensuring reliable sealing and grounding. Its earthing wall collar prevents water and gas from entering along the rod, making it ideal for easy installation in new constructions.

## Pipe entry

Besides the conventional cable entry, various pipes – such as drinking water, gas, district heating, and wastewater pipes – can be introduced into any building with the right combination of wall sleeve and press seal.



## District heating

Pipe sealing solutions for district heating systems help to prevent energy loss by ensuring thermal efficiency and reducing heat leakage. Additionally, they enhance system longevity by protecting pipes from corrosion and external damage, reducing maintenance costs.

# Floor entries

## Wastewater

Wastewater entries  
AT110  
KGF110



## Energy to garden

Building services outlets  
HAB ETGAR BHP  
HA ETGAR MIS100S  
ETGAR foundation box  
HAB-E ETGAR BHP



**Wastewater**

Wastewater entries  
HFM



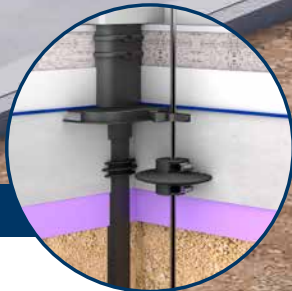
**Wastewater**

Wastewater entries  
BAL  
BALF



**Earthing**

Earthing wall collar  
HMK8-10  
FUBO ECL

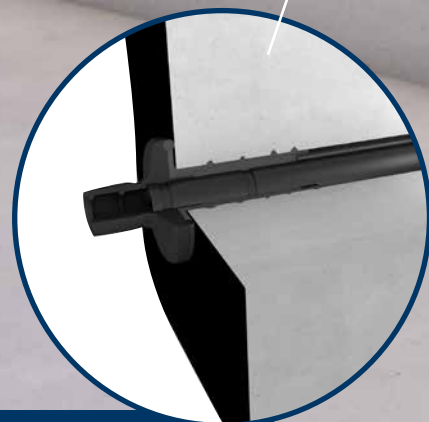


**Building entry**

Electricity/water/telecommunications/gas  
ESH Basic FUBO BHP3m



# Wall entries



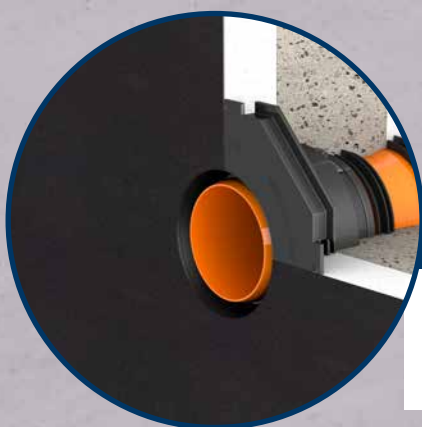
## District heating

Sealing set for corrugated cable ducts and media pipes  
WRD  
MIS200



## Building entry

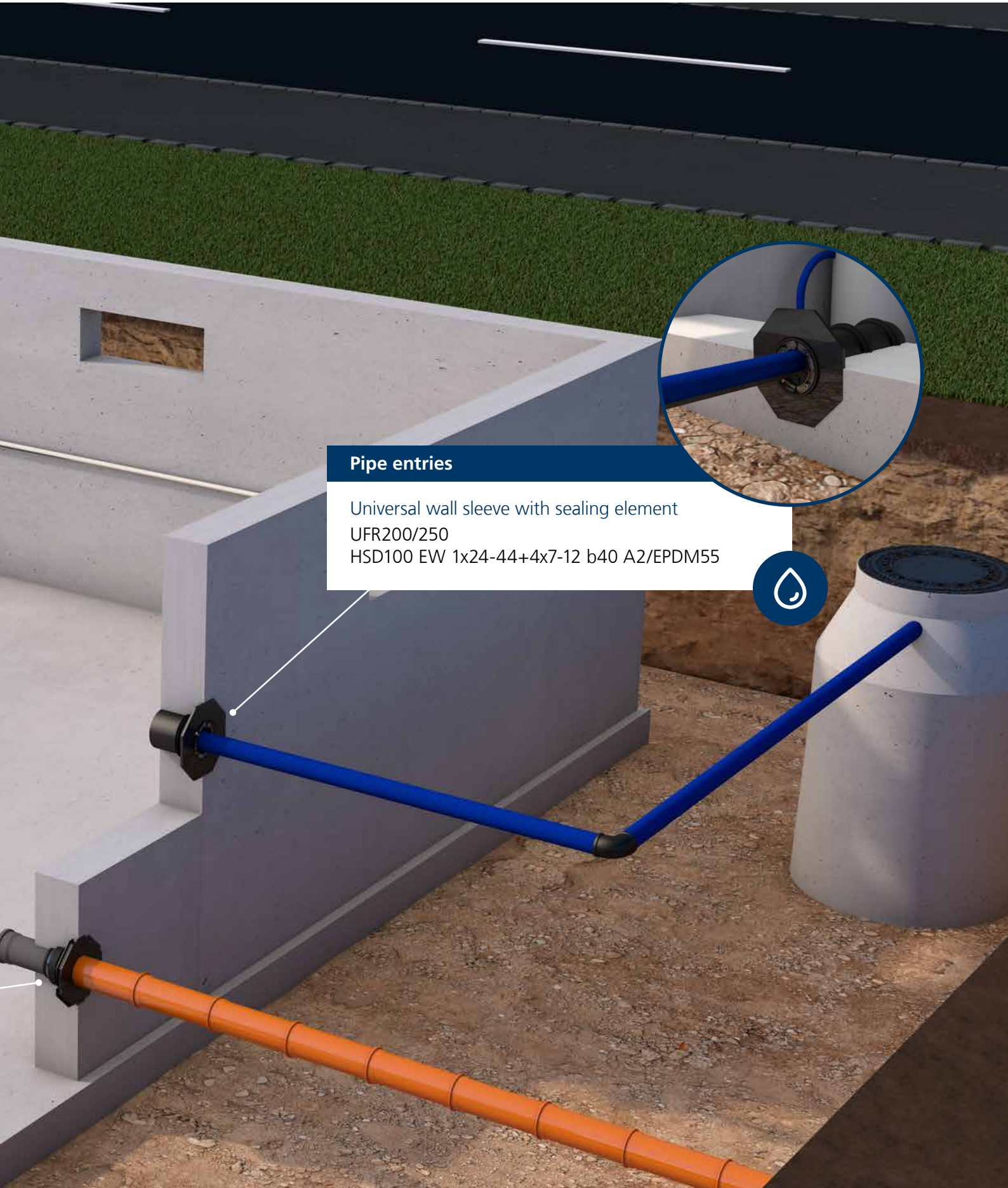
Electricity  
MIS60D 1x24-30 BL1000



## Wastewater

Wastewater entries  
UDM100





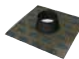













### Pipe entries

Universal wall sleeve with sealing element  
UFR200/250  
HSD100 EW 1x24-44+4x7-12 b40 A2/EPDM55



Image	Product category	Product	Installation in the wall	Installation in the floor	Retrofit
	Tundish	<b>AT Tundish</b>		X	
	Wall collar	<b>KGF</b>		X	
	Floor drain	<b>BAL/BALF</b>		X	
	Wall entry	<b>UDM/UDME</b>	X		
	Foil sleeves	<b>HFM</b>		X	
	Earthing Wall Collar	<b>HMK</b>		X	
	Single building entries	<b>ESH FUBO</b>		X	
	Set for multiple building services outlets	<b>ETGAR</b>		X	
	Set for single building service outlet	<b>ETGAR MIS</b>		X	X
	Single building entries	<b>MIS D</b>	X		X
	Single building entries	<b>MIS S</b>		X	X
	Single building entries	<b>MIS200</b>	X		X
	Cable/pipe seals	<b>HSD</b>	X		X
	Wall sleeves	<b>UFR</b>	X		

The information in this publication is based on current technical expertise and experience. However, given the multitude of possible influences affecting the processing and use of our products, this information does not exempt processors and users from running their own tests and trials. We replace all parts which are not usable due to material defects. No replacement is provided for defects caused by transportation or storage or by incorrect installation and its consequences. We assume no liability for the correctness or completeness of the information in this document.

### Hauff Technik India Pvt Ltd.

39/2475-B1, L R Towers  
South Janatha Road,  
Palarivattom, Ernakulam, Kerala, India

Tel. +91 99460 12845

[office@hauff-technik.in](mailto:office@hauff-technik.in)

HVAC\_IN\_260512