

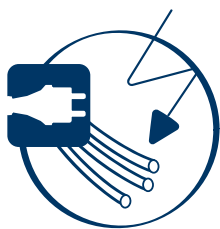


## Cable entries, pipe seals and more

Electricity, telecommunication, water, waste water, gas or district heating – whenever a perfectly safe sealing of building entries is required, Hauff-Technik offers the best possible solution. Innovative cable and pipe entries, building entries and trenchless building connections in professional quality. All from one source.

From stock or customised products. For highest efficiency, user-friendliness and longevity in all buildings. From single-family homes to complex major projects.

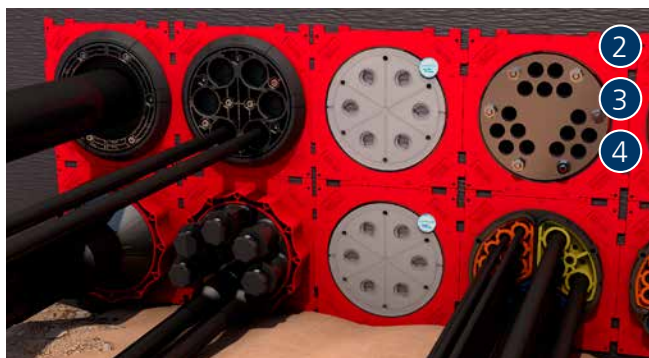
## Cable seals



Hauff-Technik can provide the right production solution for every requirement. Our cable entries, which are manufactured to the highest quality standards, impress by delivering maximum flexibility in planning and execution. What's more, they are incredibly user-friendly and can be relied upon for effective sealing. We can also offer suitable solutions for cable duct connections, whatever your requirements.



double wall insert HSI150 K2 before concreting

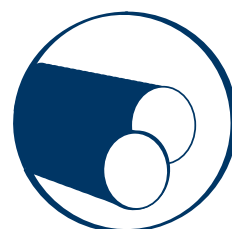


system cover HSI150 DG, HSI150 DT and HSI150 SEG



single wall insert with foldable rubber sleeve for setting in concrete and connecting cable ducts

## Pipe seals



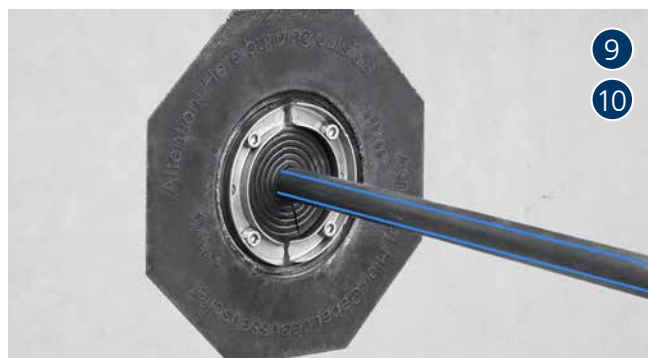
Press seals ensure that core drills or wall sleeves are sealed professionally in order to be gastight and watertight. Our portfolio of wall sleeve products will provide you with the ideal solution for any type of wall and any load case. Combined with our press seals, these products create the optimum sealing solution between building and supply line.



GKD installed in a wall sleeve FZR seals a pipe



HRD press seals installed



UFR100 with HSD100 SSG

## Waste water entries

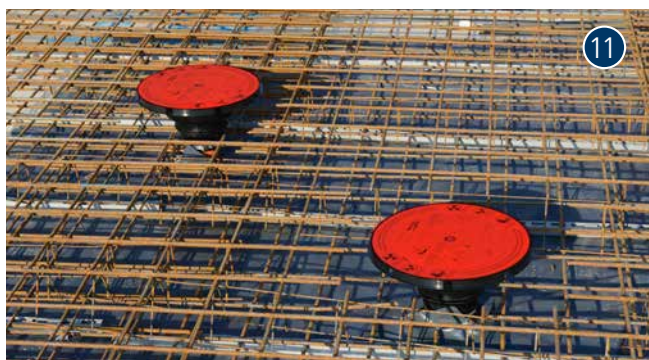


Alongside traditional connections such as those supplying power, gas, water and telecommunications, every home requires a connection for waste water. So that your building is sealed right from the start, Hauff-Technik offers a range of varied and innovative solutions for sealing waste water lines in basement walls or floor slabs that are both professional and cost-effective.

## Earthings



HEA Earthing connections and the accessories are manufactured in stainless steel to highest quality standards. They maintain their function throughout their service life and have various uses, for example in protective, functional, operational and lightning protection earthing.



AT110 installed in the reinforcement



HEA



AT110 installed in the floor slab - slip-proof and trip-free during the construction phase



HEA IS M12



KGF110 set in concrete



cross clamp KKI M12 A4 installed with HEA IS M12

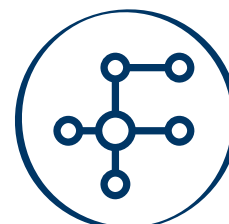


## Building service outlets



For the planning and distribution of electricity and telecommunications in the garden of the building, our ETGAR builder's packages offer the optimal foundation. Flexible empty pipes lead from this house design under the floor slab in all directions of the future garden plot.

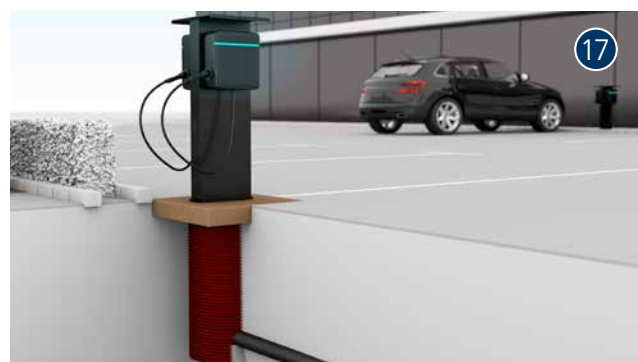
## Electromobility



To support the expansion of electric charging stations Hauff-Technik has created an innovative and universal foundation for the installation of charging stations. The Universal charging station foundation (short ULF) is an absolute lightweight and offers the user a simple and flexible foundation solution.



ETGAR building developer package



ULF



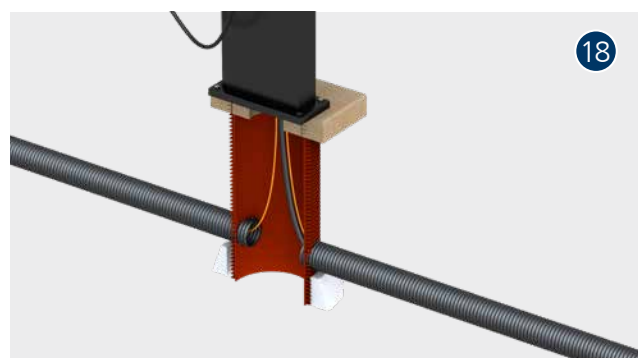
ETGAR FB set



ULF



ETGAR FB set



function of the ULF

Subheadline, light, 14 pt

HEADLINE, light, 18 pt



Cable seals

1	<b>HSI150 and HSI90 – Wall inserts</b>
	Available in two sizes HSI150 and HSI90 for setting in concrete. For single or double sided gas-tight and watertight connection of system seals for cables or cable ducts and maximum flexibility for subsequent use.
2	<b>HSI150 DG – Split system cover for retrofit sealing</b>
	For use in wall inserts HSI150 and polymer flange HSI150 DFK. Split design for sealing new cables to be installed or cables that have already been laid.
3	<b>HSI150 D ... WS – System cover</b>
	For or use in wall inserts HSI150. For sealing cable with the hot shrink-fit method.
4	<b>HSI150 S3 and SEG – Segmento</b>
	For use in wall inserts HSI150 and polymer flange HSI150 DFK. For particularly gentle sealing of cables. System cover S3 holds three segments SEG of your choice for sealing cables OD 5 - 31 mm. Application range is easily identifiable through colour-coded segments.
5	<b>HSI150 KMA172 – Single wall insert with foldable rubber sleeve</b>
	For the direct connection of cable ducts (outside) and the connection system seals for cables (inside).



Pipe seals

6	<b>GKD– Modular seal</b>
	The modular structure allows installation on all kind of pipes and diameter combinations.
7	<b>FZR – Fibre cement wall sleeve</b>
	For setting in concrete or mortar. Grooves all the way around the outside ensure a tight and force-fit bond with the wall.
8	<b>HRD SG – Standard press seal</b>
	With segmented ring technology for individual adjustment to cable/pipe diameters on site. For sealing cables in core drill holes or wall sleeves. Split design for sealing new cables to be installed or cables that have already been laid.
9	<b>UFR – Universal wall sleeve</b>
	Facilitates sealing in all types of wall through a combination of integrated patch flange and 3-ribbed seal.
10	<b>HSD SSG – Standard press seal</b>
	Standard Press Seal with super segmented ring technology. Infinitely adjustable to cable diameters on site.

# Our products at a glance



## Waste water entries

11	<b>AT110 – Tundish</b>
----	------------------------



Tundish with integrated step safe cover for setting in concrete in the base slab for optimum sealing to the underground sewer pipe. Easy compensation of an offset (after concreting) between downpipe and base drain in any direction.

12	<b>KGF – Hauff wall collar</b>
----	--------------------------------



Water barrier flange for water pressure-tight integration of waste water pipelines in floor slabs. Available in three sizes KGF110, KGF125 and KGF160, suitable for pipe outside diameter 110 mm, 125 mm and 160 mm respectively.



## Earthing

13	<b>HEA – Earthing entry</b>
----	-----------------------------



For installation flush with the formwork in waterproof concrete. For wall thickness up to 500 mm and with patented twist resistance through special contour of contact washer. Earthing connections can be made with the thread on both sides in the conductor core.

14	<b>HEA IS M12 – Insulated earthing entry</b>
----	--



For setting in concrete. Specifically for sub-station construction with patented twist resistance through special contour of contact washer. Earthing connections to the building can be made with the thread on both sides in the electrically isolated conductor core.



## Building service outlets

15	<b>ETGAR – Building developer package for building service outlets</b>
----	--



For routing and distributing electric power and communication lines from the house to the garden and for the safe installation of garden lights, energy charging stations etc.

16	<b>ETGAR FB SET – Foundation box set</b>
----	--



The polymer concrete carrier plate enables simple doweling of lamps, EV charging points, power columns or other devices with various drill-hole patterns. The termination box can simply be placed as a reserve access in an as yet unused corner of the property and used for applications at a later date.



## Electromobility

17	<b>ULF – Universal charging station foundation</b>
----	--



For the installation of charging stations and charging pedestals. Fastening option on the polymer concrete slab. Connection of power and data cables via an empty pipe connection.

18	<b>PE – corrugated pipe</b>
----	-----------------------------



The flexible corrugated pipe can be laid over larger distances without sleeves and elbows thanks to its coils and flexibility, and is ideal when it comes to extending the existing cable entry system.

### Hauff Technik India Pvt Ltd

Villa No:21, Sai Villas, Mahaveer Enclave,  
Shamshabad Village & Mandal,  
Ranga Reddy District, Hyderabad  
Telangana-501218, India

Tel. +91 99460 12845  
office@hauff-technik.in

Please find article numbers, product description and  
further information on our website:  
[www.hauff-technik.in](http://www.hauff-technik.in)