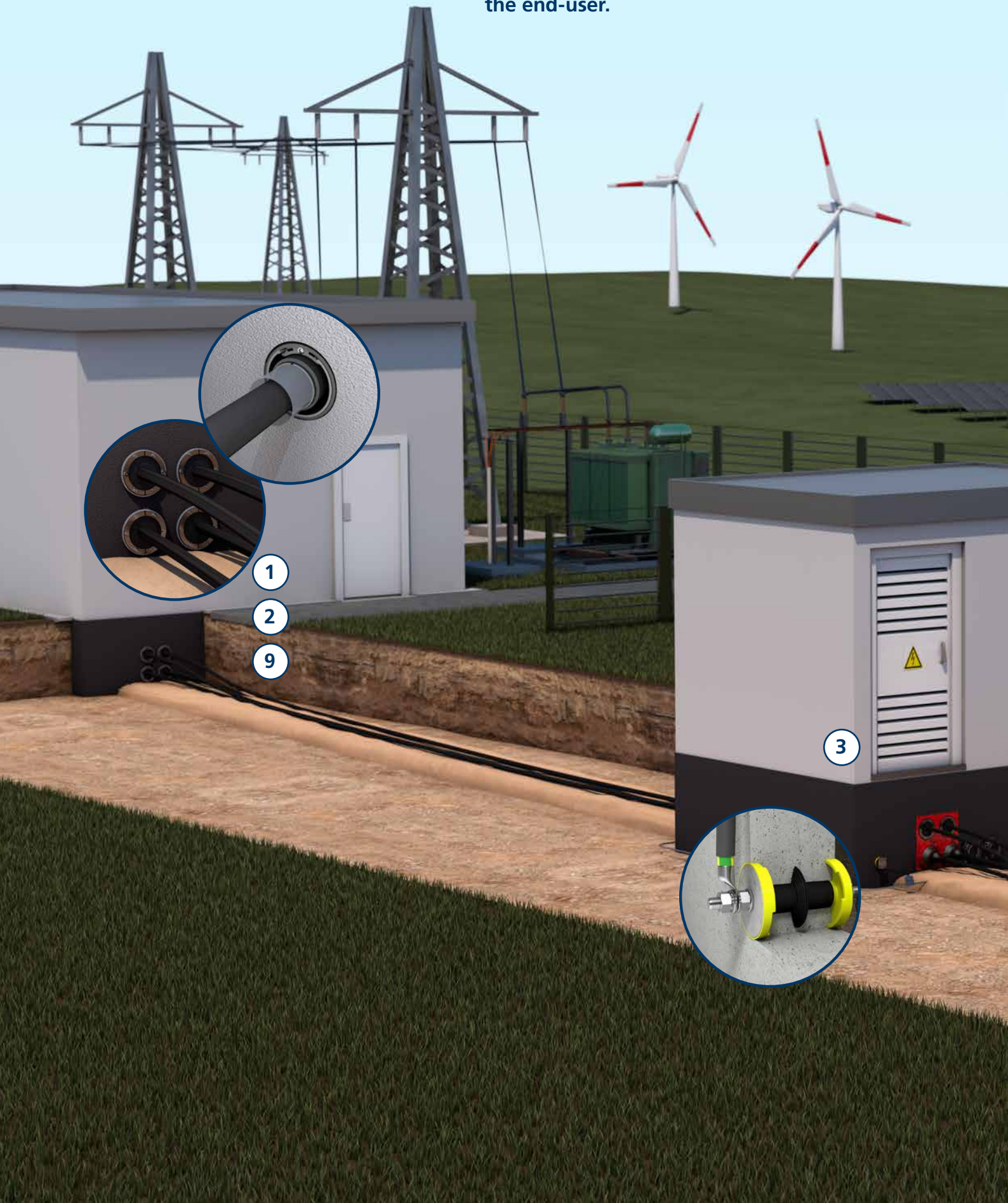




Electrical Infrastructure

Sustainable solutions for power distribution networks

The electrical infrastructure forms the backbone of our modern society, with a complex network of power lines, substations and transformers from the power station to the end-user.



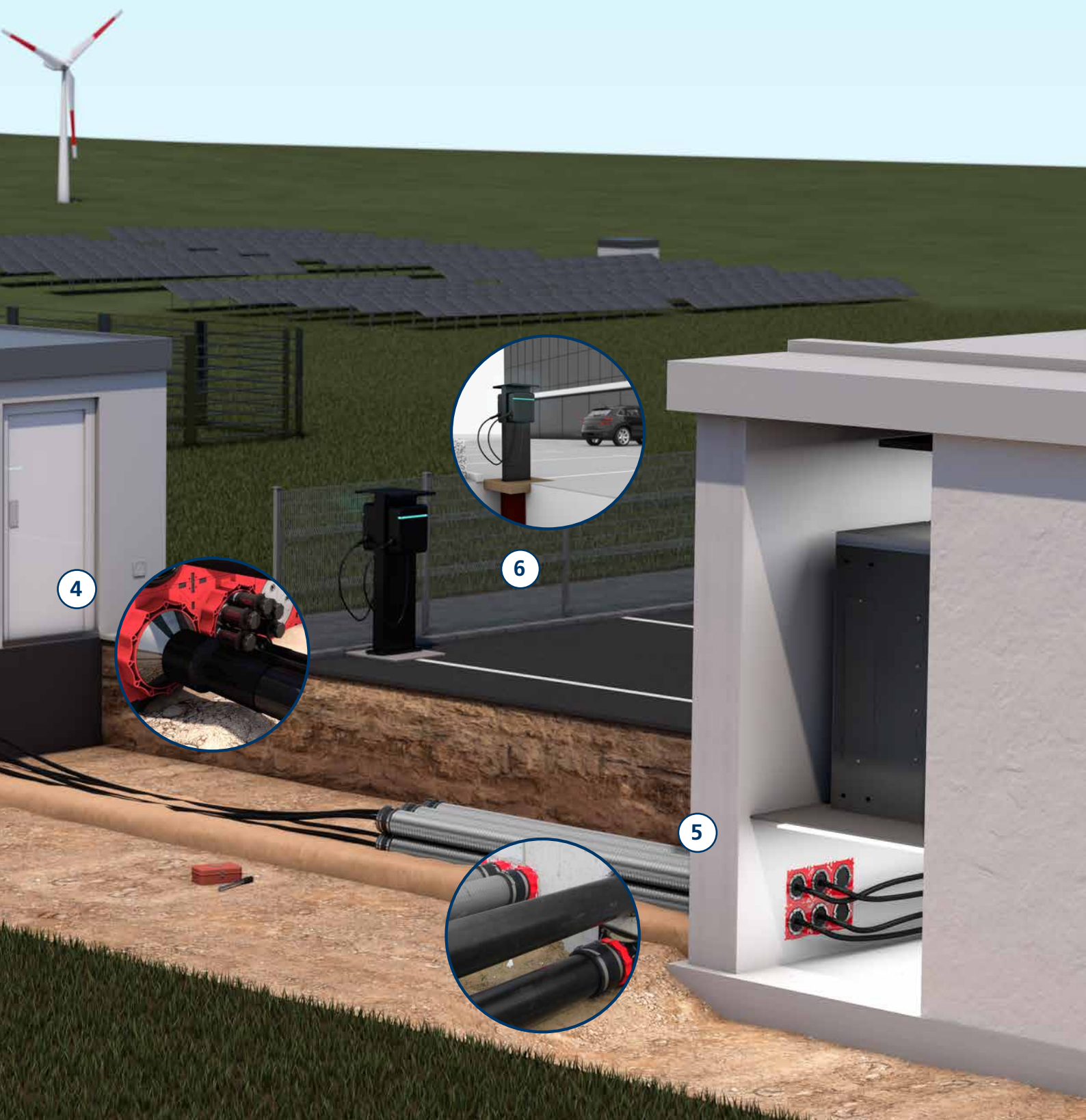
- 1
- 2
- 9

3

The interaction of the individual elements is a technological masterpiece in which sensitive primary and secondary technology components are used to ensure the supply of electrical energy.

Ongoing modernisation and maintenance of the infrastructure, together with the use of renewable energy, are essential to ensure that this is achieved and that the growing demand for electrical energy continues to be met.

Our solutions contribute at various levels to creating a resilient and modern electrical infrastructure and minimising the risk of failure: Secure sealing protects sensitive technology from various hazards such as water ingress or damage caused by rodents and critters. Low-maintenance cable ducts and sophisticated all-in-one systems ensure trouble-free operation. Our charging infrastructure solutions enable the efficient expansion of a sustainable charging network.



4

6

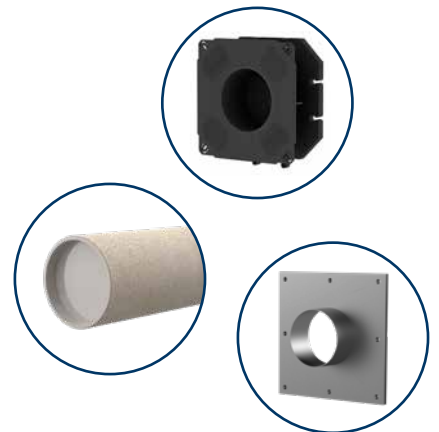
5

Solutions from Hauff-Technik

1 Wall sleeves

As experts in sealing solutions, we at Hauff-Technik know that a leakproof building entry starts with getting the "hole in the wall" right. It is for this reason that we have dedicated several decades to the development of innovative, high-quality and easy to-use wall sleeves and flange constructions.

We can supply products for installation flush with the formwork, for setting in concrete and for retrofit bolting. Fixed/loose flange constructions provide a reliable means of integrating liquid applied bituminous coatings or waterproofing membranes, the use of which is prescribed according to DIN 18195 Part 6 for protection against water ingress.



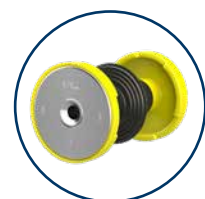
2 Press seals

The innovative press seals from Hauff-Technik provide single or multiple cables. The solutions range from closed seals for first-time installation to split versions for retrofit sealing of cables that have already been laid. We can provide the ideal seal for every requirement, be it tailor-made to the millimetre or suitable for universal use on site, round, oval or even square.

3 Earthings

HEA earthing systems ensure that the earthing connection point is watertight along its length. They can be installed as a built-in part or retrofitted. Hauff-Technik offers an insulated earthing entry specifically for substation construction. The earthing connections, which are manufactured in stainless steel to the highest quality standards, maintain their function throughout their service life.

They have various uses, for example are used for protective earthing, functional earthing, operational earthing and lightning protection earthing.



Solutions from Hauff-Technik



4 Cable entry system HSI150/90

The HSI cable entry system stands out as a versatile modular solution. The system is available in two sizes, in nominal diameters of 150 and 90 mm. It sets the standard for cable entries, to be installed flush with the formwork for concreting in walls.

The wall insert HSI150/HSI90 offers maximum flexibility during subsequent use and is fitted with a pressure-tight closing cover ex works. A variety of system seals are available for sealing cables – in closed or split versions, depending on the requirements – and for making pressure-tight cable duct connections.

Hauff-Technik also offers the KES150/KES90 pressure-tight cable entry system, which is compatible with the HSI150/HSI90 system. In combination with the Hateflex spiral conduit, the KES system provides optimal protection for the cables to be laid.

5 Cable entry system KES150/90

Over the course of its life, a building frequently undergoes renovation or refurbishment. In most cases these activities only take place in the parts of the building located above ground level. The requirements for the cable infrastructure in a building can also change significantly over time.

To enable these changed requirements over time, it is recommended to prepare a ducting system through which cables can be installed easily.

For this purpose, Hauff-Technik offers the KES150/KES90 pressure-tight cable entry system, which is compatible with the HSI150/HSI90 system. In combination with the Hateflex spiral conduit, the KES system enables clean and protected cable laying in the ground provides optimal protection for the cables to be laid.



6 Electromobility



For the predicted upturn in electromobility, it is therefore necessary to expand the corresponding EV charging infrastructure. Moreover, the European government supports the Europe-wide expansion of the EV charging infrastructure through Directive (EU) 2018/844. Here, the individual member states are asked to define country-specific regulations for the minimum number of charging points. With the universal charging station foundation, Hauff-Technik has created an innovative and universal foundation for charging stations. ULF offers a foundation solution for various types of charging stations and charging pedestals and for a variety of installation situations.

Single building entries

Single building entries from Hauff-Technik provide professional and reliable seals between buildings and supply lines for services like gas, water, power or telecommunications.

Whether through basement walls or floor slabs, they can be installed quickly and safely in a matter of minutes and are gas tight and watertight up to 1 bar.



Our products at a glance

Product category			Product	Power plants	Substations	Transformer stations	Residential buildings	Industrial buildings
	Wall sleeves	①	SDF		X	X		
			UFR	X	X	X	X	X
			ZVR	X	X	X	X	X
			BWS	X	X	X		X
	Cable/Pipe seals	④	HSI90 D...	X	X	X		X
			HSI150 DG...	X	X	X		X
			HSI150 D...	X	X	X		X
			HSI150 MA...	X	X	X		X
		②	HSI150 SF	X	X	X		X
			HRD	X	X	X	X	X
			HSD	X	X	X	X	X
			SEG		X	X		
⑨	RSRT		X	X				
	Earthings	③	HEA...	X	X	X	X	X
	HSI	④	HSI90	X	X	X		X
			HSI150	X	X	X		X
	Retrofit solutions	④	HSI...DFK...	X	X	X	X	X
			FA/FAG	X	X	X	X	X
	Cable duct connection	⑤	HSI..KMA	X	X	X		X
			HSI...GSM...	X	X	X		X
			KES	X	X	X		X
	EV charging infrastructure	⑥	ULF				X	X
	Single building entries		ESH				X	X

The information in this publication is based on current technical expertise and experience. However, given the multitude of possible influences affecting the processing and use of our products, this information does not exempt processors and users from running their own tests and trials. We replace all parts which are not usable due to material defects. No replacement is provided for defects caused by transportation or storage or by incorrect installation and its consequences. We assume no liability for the correctness or completeness of the information in this document.

Hauff-Technik MIDDLE EAST General Trading L.L.C.

PO Box 35070
WH-03, Plot No 2150483
Marakech Street, Umm Ramool Dubai UAE
Tel. +49 7322 1333-520
office@hauff-technik.ae